

LUTRONIC

enCurve

Apoptosis-inducing
Radiofrequency

CREATING GREAT CURVES



The Simple, Comfortable Way to Deliver Circumferential Reduction

The enCurve is the easy and comfortable way to reduce adipocytes through apoptosis-inducing radiofrequency. Working through controlled delivery of energy deep into the adipocytes, enCurve utilizes a specialized frequency (27.12 MHz) combined with the ideal 300 Watts of power to selectively target and heat adipocytes to the optimal temperature to cause denaturation of cells, leading to adipocyte's death.

NON-CONTACT RF

The appropriate applicator is placed over the area to be treated and the treatment is selected from the easy to operate GUI. The device measures the impedance of the tissue and begins to tune to the adipose tissue. It constantly adjusts energy in order to ensure and maintain homogeneous heating of the tissue. Patients relax while enCurve works to reveal their curves, while you gain the profits.



PROVIDE THE CURVES YOUR PATIENTS DEMAND



Before - 89.5 cm



After - 79 cm

Total circumferential reduction -10.5 cm
Images Courtesy of Hyeeyon Kim, MD, S. Korea



Before



After

Images Courtesy of Nark-Kyoung Rho, MD, S. Korea



Before - 77.1 cm



After - 74.8 cm

Total circumferential reduction -2.3 cm
Images Courtesy of HJ Kwon, MD, S. Korea



Before



After

Images Courtesy of Hyun Jun Park, MD, S. Korea



Before - 84 cm



After - 75.5 cm

Total circumferential reduction -8.5 cm
Images Courtesy of HJ Kwon, MD, S. Korea



Before



After

Images Courtesy of Hyun Jun Park, MD, S. Korea

WHAT SETS ENCURVE APART?

- Safely destroys fat cells while protecting epidermis and dermis
- 2 Applicators for variety of treatment options including abdomen, thigh, and arm
- Customize treatments with Personalized Impedance Synchronization Application technology (PISA™)
- Safely leave patient unattended during most of treatment maximizes staff time
- Easy to install and operate; No consumables
- 300 Watts deliver ideal power for optimal treatment outcomes
- Air Mode works to eliminate sweat on tissue to prevent burn risk



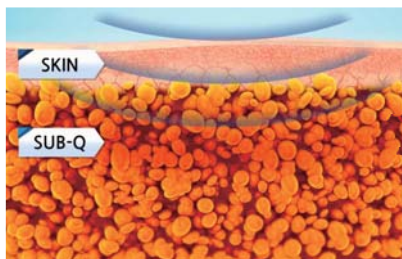
PERSONALIZED IMPEDANCE SYNCHRONIZATION APPLICATION (PISA)

The enCurve synchronizes treatment energy with the change in the patient's impedance in order to minimize energy loss and achieve a better clinical outcome. PISA technology overcomes shortcomings of traditional RF devices.

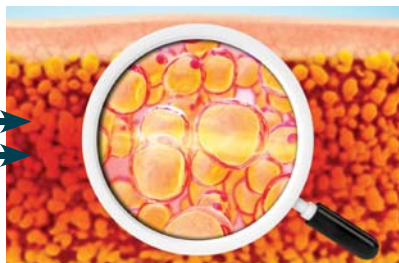
WHY 27.12 MHZ IS THE MAGIC NUMBER TO SAFELY TREAT ADIPOCYTES

27.12 MHz frequency is more highly absorbed by adipocytes. As a result, adipocytes are more responsive than the cells in epidermis, dermis, or muscles, making this frequency ideally suited to precisely target the adipocytes. The apoptosis-inducing radiofrequency causes the adipocytes to vibrate or oscillate at a high rate which generates frictional energy (heat). The frictional energy leads to apoptosis of adipocytes.

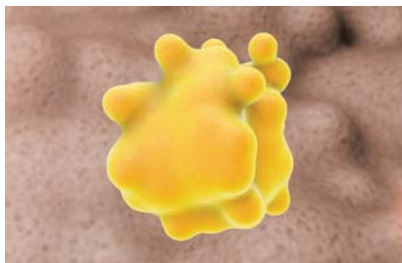
APOPTOTIC PROCESS



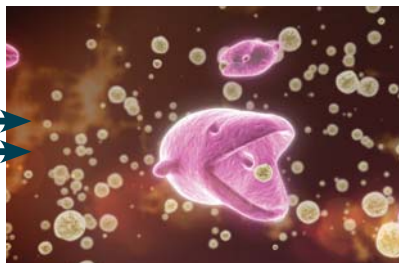
Energy from enCurve focuses on the adipocytes.



Lipocytes vibrate rapidly creating heat.



The heat leads to the apoptosis of adipocytes.



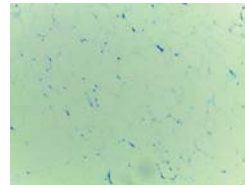
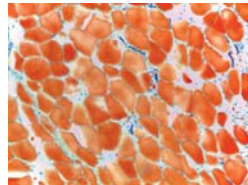
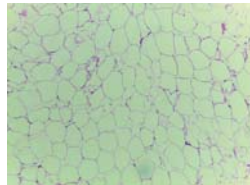
The body's own natural processes remove the adipocytes.

Easy to Use While Achieving Maximized Results

- Easy to use touch screen interface
- Ergonomic articulating arm with multiple joints and wide range of motion
- Two adjustable applicators conform to most body types and areas
- Air flow technology ensures safe and comfortable treatments
- PISA technology maximizes energy deliver for best results

ENCURVE EFFECTIVELY TARGETS AND DESTROYS ADIPOCYTES

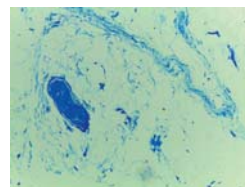
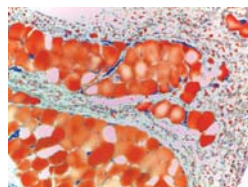
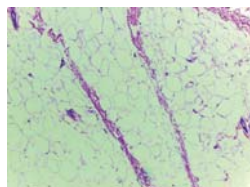
BEFORE



Tissue stain on treated swine tissue, clearly show apoptosis of adipocytes after only a single 300 W 20 minute treatment.

Images Courtesy of ChungAng University Hospital

1 WEEK
AFTER
1 TX



H&E

Oil Red O

Toluidine Blue

EXPERTS AGREE, ENCURVE PROVIDES AN ADVANTAGE



"The enCurve applicator can be positioned over both the abdomen and flanks at the same time, providing a hands-free procedure. EnCurve is a new generation of intelligent adipocyte-targeting systems to ensure great curves with maximum comfort for the patient, and minimum stress for the operator."

Nark-Kyung Rho, MD, Leaders Aesthetic Laser & Cosmetic Surgery Center, S. Korea

SPECIFICATIONS*

Laser Medium	Apoptosis-inducing Radiofrequency
Frequency	27.12 MHz
Output Power	Max. 300W
Applicator	AB Applicator, MULTI Applicator

LUTRONIC CORPORATION

Lutronic Center, 219 Sowon-ro, Deogyang-gu, Goyang-si, Gyeonggi-do, KOREA
TEL. +82 31 908 3440 / FAX. +82 1600 3660
e-mail. office@lutronic.com

LUTRONIC AESTHETIC, INC.

1 North Avenue, Ste. C, Burlington, MA 01803, USA
TEL. +1 888 588 7644

LUTRONIC JAPAN CO., LTD.

9F Hakataekimae Center Bldg., 1-14-16 Hakataekimae, Hakata-ku,
Fukuoka city, Fukuoka-pref., 812-0011, JAPAN
TEL. +81 92 477 2755 / FAX. +81 92 477 2756

LUTRONIC CHINA

A-28F, Posco Center, Hongtai Dong jie, Dawangjing Science Business Park, Chaoyang
District, Beijing, CHINA
TEL. +86 10 8453 8551

lutronic.com

©2016, LUTRONIC Group of Companies. All rights reserved. LUTRONIC, its logo, and enCurve are trademarks or registered trademarks of the LUTRONIC Group of Companies. This product or the use of this product is covered by one or more US and foreign patents or patent application pending. *System or Handpiece designs and specifications are subject to change without notice. LUTRONIC-BR-4100160500 Rev. 1.3
For International Use Only.

LUTRONIC