

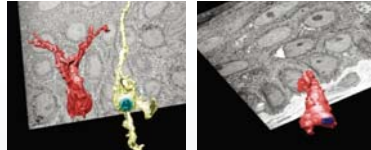
## The Next Level in Treatment Versatility

LUTRONIC's Dual-pulsed Q-switched Nd:YAG SPECTRA™ laser has been engineered to meet the growing demands of a busy clinic, and includes a variety of efficacious treatment options, customizable parameters, built-in safety, minimized downtimes, all at an affordable price.

### MULTIPLE LASER MODES AND POWER SETTINGS MAXIMIZE TREATMENT OPTIONS

With four distinct Q-switched mode wavelengths - 1064 nm, 532 nm, 585 nm, 650 nm, the robust Spectra has the versatility to provide your practice with a wide range of clinical options for treating your patients. Lutronic continually expands its treatment applications and the **Spectra is the first Q-switched Nd:YAG laser cleared for the treatment of melasma**. The technically advanced Spectra system offers an edge over other lasers and provides enhanced clinical outcomes.

3D Structure of Melanocyte in Melasma Patient



Before After  
Courtesy of I.H.Kim M.D., Dermatologist, South Korea

### EASE OF USE AND PEACE OF MIND

The Spectra was built with the physician in mind and includes a user-friendly GUI, user programmable buttons for personal parameters, auto-detected handpieces an adjustable aiming beam. It even helps ensure that it stays up and running with its built-in auto-calibration and self-restoration functions.\*

\* Auto-calibration and self-restoration functions is optional.

### BEHIND THE ADVANCED TECHNOLOGY

The robust Spectra has a long list of features that ensure it is a cut above the rest.

#### • Multiple treatment options

- Spectra Laser Toning™
- US Patented, Spectra Peel™
- Spectra Soft Peel™
- Spectra Gold Toning™
- Spectra Gold Peeling™

- High peak power
- Uniform beam profile
- 4 wavelengths
- Auto-calibration and self-restoration
- Programmable memory buttons
- Ergonomic
- Aiming beam
- Multiple handpieces
- Spectra mode

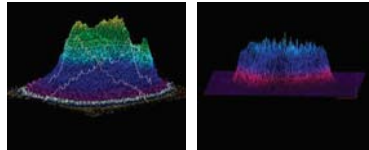
## PROVIDE THE RESULTS YOUR PATIENTS WANT



### THE POWER YOU NEED, THE THERMAL DAMAGE YOU DON'T

Engineered for performance, the Spectra's beam profile and power options ensure that the energy is delivered efficiently to maximize effect while minimizing damage to surrounding tissue.

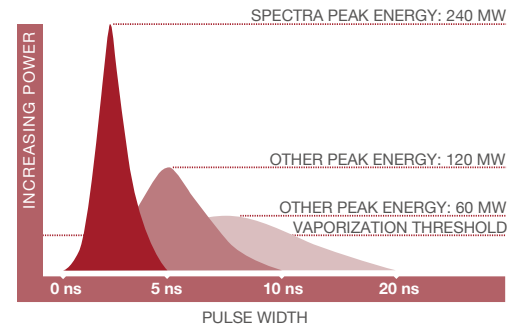
### UNIFORM TOP HAT BEAM PROFILE



Others Spectra

### APPLICATIONS

Melasma  
Epidermal nevi  
Tattoo removal  
Active Acne  
Non-ablative resurfacing  
Pigmented and vascular lesions And more...



SPECTRA's combination of high peak power and short pulse width delivers efficient destruction of the target pigment with minimal collateral thermal damage, meeting the criteria of selective photothermolysis.

*"Lutronic's advanced dual mode Nd:YAG SPECTRA laser will bring your practice amazing treatment versatility. Treatments for melasma, tattoo removal, non-ablative resurfacing, as well as pigmented lesions. Our patients are very happy with their results. Additionally, its two dye headpieces are excellent choices for various colored tattoo's."*

Mitchel Goldman, M.D., Dermatologist & Cosmetic Surgeon,  
San Diego, CA, USA



**LUTRONIC®**

VARIETY OF  
HANDPIECES  
AVAILABLE\*



SPECIFICATIONS \*

Laser Medium		Nd:YAG Crystal
Wavelength		1064 nm / 532 nm (Option: 585 nm, 650 nm)
Operating Mode		Q-switched & Spectra Mode (Quasi-long Pulse)
Beam Profile		Top Hat Mode
Pulse Energy	1064 mode (Q-switched mode)	Max. 1200 mJ
	532 mode (Q-switched mode)	Max. 400 mJ
	Spectra mode (1064nm)	Max. 1500 mJ
	585 mode	Max. 250 mJ
	650 mode	Max. 150 mJ
Energy Calibration		External, Auto-calibration & Self-restoration
Pulse Width		5 - 10 ns (Q-switched Mode) / 300 us (Spectra Mode)
Solid Dye Laser (Option)		585 nm: 7.5 J/cm <sup>2</sup> , 650 nm: 4.5 J/cm <sup>2</sup>
Spot Size (Auto Sensing)	1064 nm	3,4,5,6,7,8 mm / 1,2,3,4,5,6,7 mm (option)
	532 nm	2,6,3,4,4,3,5,2,6,0,6,9 mm / 0,8,1,7,2,6,3,4,4,3,5,2,6,0 mm (option)
	585 nm	2 mm
	650 nm	2 mm
Pulse Rate	1064, 650, 585, 532 mode	Max. 10 (Hz)
Memory		8 User Programmable Memory
Optical Delivery		Articulated Arm
Aiming Beam		Diode 655 nm (Red), Adjustable Brightness
Cooling		Closed Circuit Water to Air
Input Power		Single phase, AC100-120V or AC220-230V, (Fuse 125V/25A or 250V/15A), 50/60Hz, Power consumption: 1.7 kVA
Dimensions		295 mm (W) x 656 mm (L) x 1700 mm (H) or 11.6 in (W) x 25.8 in (L) x 66.9 in (H)
Weight		88 kg or 194 lb



**Lutronic Corporation**  
Room 403-1,2,3,4,5, 404 Ilsan Technotown 1141-1, Baeksok-dong,  
Ilsandong-gu, Goyang-si, Gyeonggi-do, KOREA  
TEL +82-31-908-3440 / FAX +82-31-907-3440  
e-mail. office@lutronic.com

**Lutronic Japan Co., Ltd.**  
9F Hakataekimaecenter Bldg., 1-14-16 Hakataekimae  
Hakata-ku Fukuoka city Fukuoka-pref. 812-0011 JAPAN  
TEL +81.92.477.2755 / FAX +81.92.477.2756

**Lutronic China**  
Suite 22, Hyundai Motor Tower, 38 Xiaoyun Road,  
Chaoyang District, Beijing, CHINA  
TEL +8613910765411

©2012, LUTRONIC Group of Companies. All rights reserved. LUTRONIC, its logo and SPECTRA are trademarks or registered trademarks of the LUTRONIC Group of Companies. This product or the use of this product is covered by one or more US and foreign patents or patent application pending. \*System or Handpiece designs and specifications are subject to change without notice. SPECTRA-BR-4100149000

**LUTRONIC®**



**SPECTRA™**  
Dual Mode Q-switched  
Nd:YAG Laser

TAKE YOUR PRACTICE  
TO THE NEXT LEVEL

**LUTRONIC®**

